



theWI Nottinghamshire

# The Hornblower



2023  
DECEMBER

*Merry Christmas*



*and  
a Happy New Year*



<https://nottinghamshire.thewi.org.uk>



Nottinghamshire WI



Nottinghamshire WI



NottsFedWI



CONTACT: Nottinghamshire Federation of WIs. Trent Bridge House, Beastmarket Hill, Newark. NG24 1BN. Telephone: 01636 673550  
Email: [admin@nottswi.org.uk](mailto:admin@nottswi.org.uk) OFFICE HOURS: Mon, Tues & Wed 9.00am – 3.00pm. Closed Thursday & Friday

HORNBLOWER CONTACT & PRINT DETAILS:

February 2024 edition: Collect from Mon 29 January

Editor: Jenny Bailey. Email: [hornblowereditor@nottswi.org.uk](mailto:hornblowereditor@nottswi.org.uk)

Copy deadline for February 2024 edition: 4 January 2024

# Chair's Letter

Bethlehem is a city in the West Bank, Palestine. The city's economy is largely tourist-driven; international tourism peaks around and during Christmas, when Christians embark on a pilgrimage to the Church of the Nativity, revered as the location of the Nativity of Jesus. Movement around the city is limited due to the Israeli West Bank barrier. [Wikipedia] Gaza is many miles away from The West Bank but it is still part of Palestine. How many babies will be born there over Christmas within sight of an alien army and with no real roof over their heads? The world in many ways is such a small place now that actions in one place have a knock-on effect around the globe. And yet most of us will have a cosy and peaceful Christmas, an indulgent time in front of the TV or radio or enjoying the awe and wonder of small children as they open their myriad of presents. My family are now young teenagers or older but it is still a lovely time when we all get together.



And as WI members we will be together at our parties or Christmas meetings, when the usual formal stuff is humbug. **So, its Merry Christmas from me and a Merry Christmas to you all.**



Best wishes, Helen

## FROM COUNTY OFFICE

Tea at the House events. **The office team wish all our members a Merry Christmas and a Happy New Year.**

*Sue Sanderson. Federation Secretary*

**ENCLOSURES:** 1. Whist Evening; 2. Bridge Day; 3. Long Alley Skittles; 4. Soho Stunner; 5. Prize Draw Tickets; 6.

Resolution Voting Forms

**OFFICE CLOSURE:** Wednesday 20<sup>th</sup> December @ 1.00pm until Tuesday 2<sup>nd</sup> January 2024 @ 9.00am



## Don't Forget . . .

Reminders: Forms to be in the office before:-

- |                                 |             |
|---------------------------------|-------------|
| • Burns Lunch (24/1)            | 8 January   |
| • Theatre Tour (2/2 or 22/2)    | 9 January   |
| • Experienced Treasurers' (6/2) | 15 January  |
| • Group Rep Meeting (5/2)       | 22 January  |
| • Felting (17/2)                | 23 January  |
| • Bingo Evening (8/3)           | 19 February |
| • Canada Cup Competition        | 23 February |
| • Literary Lunch (14/3)         | 26 February |
| • Sheila Norris Challenge       | 28 February |

## CALENDAR Dec 2023, January & February 2024

See enclosure for application & full details

7/12	Coffee Morning	10.00am	County House
2024			
22/1	Autism Talk	7.30pm	Zoom
2/2	Theatre Tour	10.30am	Nottm
5/2	Group Reps	2.00pm	County House
6/2	Experienced Treasurers'	10.00am-1.00pm	County House
17/2	Felting	9.45am	County House
22/2	Theatre Tour	10.30am	Nottm



## WI SUPPORT TEAM

Chair: Helen Ainley

Hello everyone! This month I would like to remind you of the **Sheila Norris Rose Bowl Challenge for 2024**. We are asking you to come up with 3 Ways in which to make your own **WI EVEN BETTER** than it is now. You can be as creative as you like with your entries, as long as they are no bigger than A3 size and can be in any medium. We would like you to think of how you might like to make your WI more inclusive to all women, are there any little tweaks that could be made to enhance the experience for members? You have free rein to think outside the box, we look forward to seeing your entries which need to be received at Notts Fed of WIs, Trent Bridge House, Beasmarket Hill Newark, Notts, NG24 1BN by **28<sup>th</sup> February 2024**. All the entries will be displayed at the Annual Federation Meeting on 23rd March 2024. **I would like to send very best wishes to you all for the festive season and a happy & healthy New Year from all the WI Support Team.** Please email [helenainley@nottswi.org.uk](mailto:helenainley@nottswi.org.uk) or contact via the Office should you need any help.



**SATURDAY 23 MARCH**  
10.30am open from 9.30am  
Minster School  
SOUTHWELL

## Annual Meeting

**Morning Speaker: Ann Jones. NFWI Chair**

**Afternoon Speaker: Gill Thomas**

**One armed Sewist**

**Great British Sewing Bee**

**Craft Market: Prize Draw**

**Come and enjoy our meeting**



## CREATIVE ACTIVITIES

June Freeman

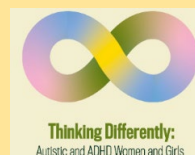
Congratulations to the team from **Forest Town WI** on winning the **Music Quiz trophy** and many thanks to **Jenny Holmes** for setting the questions and hosting the evening. The **Bromley House Library** was visited by members on two different days in October and November. The building has a fascinating history, with a lovely garden, in the centre of Nottingham and many members did not know it even existed.

Coming up next year for you, is a tour of the **Theatre Royal in Nottingham**, which opened in 1865. Ezekial Bones will guide you backstage to discover the magic and traditions of this theatre. There are two dates to choose from, **Friday 2<sup>nd</sup> or Thursday 22<sup>nd</sup> of February**. You can learn the craft of **Felting on Saturday 17<sup>th</sup> February** when the tutor will teach you how to needle felt and create a beautiful 2D framed landscape picture. More events are in the planning stage and will be available soon. **The Creative Activities team would like to wish all our members and their families a very peaceful Christmas and a healthy 2024. We look forward to seeing you at our many future activities.**



## CAMPAIGNS and COMMUNICATIONS TEAM

**Autism Talk**  
**Monday 22 January**  
7.30pm on Zoom  
**ZOOM Free**



Email for Link: [admin@nottswi.org.uk](mailto:admin@nottswi.org.uk)  
"Thinking Differently" is the WI's campaign about autism and ADHD in women and girls.





## CAMPAIGNS & COMMUNICATIONS

### Chair: Suzanne Plamping

some of the expert panel on climate change and the environment. We were honoured to have many speakers and panellists including Lady Theresa May, Sir Alok Sharma, Ed Miliband MP, Chris Skidmore MP as well as representatives from voluntary and charity organisations: Angela Francis, Director of Policy Solutions for WWF; Tessa Khan, Co-Founder of Uplift; Pete Chalkley, Director of ECIU; Emma Howard Boyd, Former Chair of the Environment Agency; Helen Pankhurst of Care International; Luke Tryl, UK Director of More in Common; Professor Lorraine Whitmarsh, Professor of Social Change at the University of Bath."

If you interested in getting involved either, contact the office or check out the information on <https://mywi.thewi.org.uk/public-affairs-and-campaigns/current-campaigns/climate-change>

### SIMPLE ACTIONS FOR OUR ENVIRONMENT

Did you know that Nottinghamshire Federation WI collect these items to re-use/recycle?

- **Jewellery & Watches** in any material even if damaged or broken
- **Currency** any coins or banknotes, UK & foreign (even if out of circulation)
- **Stamps** loose, single, albums, first day covers, presentation packs, collections
- **Gadgets** Sat-Navs, Ipods, MP3 players, games consoles, games & accessories

- **Mobile Phones**
- **Cameras** old film, digital and video
- **Inkjet Cartridges**

You can take items to County House or to any Federation event you are attending. **From all the Team, have a Merry Christmas & a Happy New Year.**



## FEDERATION TREASURER

### Jenny Bailey

Good news, the Federation has received **£338** from the proceeds of the NFWI raffle! Thank you very much for buying a ticket. Guess what? **The Federation 2024 Prize Draw** tickets will be with your WI this month, the draw taking place at the Annual Meeting in March 2024. There are excellent prizes to be won so please buy some tickets from your Treasurer.

**WI Treasurers: IMPORTANT!** Updated Excel Spreadsheet from MyWI - When you begin your new financial year, you must download the updated spreadsheet from MyWI. The version you need is dated **April 2023** (this should be seen when you click the link). This version has 2 new facilities:

1. Section B1.5 (on page 2) will automatically calculate any outstanding Federation/NFWI portions which you have collected in but not forwarded to the Federation Office.
2. Section C1: 'Funds Received' and 'Paid As Agent' on page 3, has an additional column. Enter any balance held from the previous year (from section C1 of the previous year's book). Receipts and payments for the current year will be completed automatically from the Receipts and Payments pages of the Account Book. The total will automatically calculate and populate B1.5.

**Using a digital card machine eg SumUp:** If income/payments for **Fundraising** are incurred using a card machine the costs must be recorded in the **WI Fundraising column** of the Payments sheet, with a clear description of the fundraising activity.

If income/payments for any other reason are accepted using the card machine, ensure the costs for these are recorded in **Column 12: 'Other'**.



- Ensure a clear reference is entered onto each transaction when using the card machine.
- Ensure members are kept informed of the total cost of using the card machine.
- Recording Bank Charges: Enter the amount in Column 12 'Other' on the Payments Sheet with a clear description eg Bank charges from...01/10/2024 to 31/10/2024.
- Ensure members are kept informed of how much the banking facility costs the WI.

The workshop organized for New Treasurers in November by Pauline Redmile, our IFE Trainer, went very well. In **February**, **experienced treasurers** have the opportunity to meet for a refresher. Please do apply, everyone can always learn something new.

Thank you to WIs and members for your kind donations to Federation funds. The Trustees and Team members are all volunteers who work hard on behalf of the Federation to give you all the opportunity to learn and create – and also to have a bit of fun. So, thank you all.

**I wish you all a good, and not too expensive, Christmas and a Happy New Year.**



## SPORT & LEISURE

### Chair: Wendy Richardson

**A Merry Christmas** from your Sports and Leisure Team. If you are looking for present ideas, why not ask for a set of darts or a Rummikub set so that you can take part in our competitions next year? The Darts Pairs final was contested between **Bleasby and Shelford WIs**. After three good games **Maureen Harper and Angela Unwin of Shelford WI** came out on top again; congratulations to them and well done to **Donna Ward and Denise Langley of Bleasby WI**.

In October, 21 members met at Bingham WI Hall for our annual Rummikub competition. After 5 x 20 minute games, **Beryl Northcote of Morton, Fiskerton and Rolleston WI** was the winner, with a fantastic score of just 5 points!

**A Happy New Year** to you all! Coming up next year we have another **Bingo night** organised for 8 March at Lowdham and our annual **Bridge Day** on 15 March at Oxtou.



C  
L  
E  
A  
N  
  
R  
I  
V  
E  
R  
S

## CANADA CUP competition 2024



*For this competition we would like you to write an amusing acrostic using the WI resolution 'CLEAN RIVERS'*

*Each letter must be the first letter of each line.*

The cup will be presented at the Annual Federation Meeting on **Saturday 23 March**

Please see the enclosure for full details.

**Entries to the office by Friday 23 February**

## TEAMS 4 U APPEAL

Thank you so much for the beautiful children's knitted hats, gloves and scarves, as well as the wonderful knitted dolls you have sent into County House for the **Shoebbox Project**. Their journey began at the end of October with a car filled to the brim taken to meet **Wendy Willan** for the exchange of bags. She was overwhelmed with your generosity and wished to thank you all so much. They never know exactly where boxes are going until they leave although they will be delivering to Georgia, Moldova, Romania, Ukraine and Bosnia and she has the privilege of travelling to the City of Oradea in NW Romania on 10-15 December. Each lorry will take **8500 - 9000 boxes** which will be distributed in and around Oradea; gifts which bring a moment of magic between the giver and the child. **Thank you very much for your kindness.**



# Highlights

Many WIs go on walks and **Ollerton WIs** Walkie Talkie group are just one of them, here they are enjoying a cuppa and a chat whilst on one of their regular walks. They try to walk every month depending on the weather, this time it was a lovely one in Clumber Park when the weather was kind to them for a change.



**Suton-on-Trent WI** were treated to a lovely fish and chip lunch at The Plough, Norwell by member **Rosie Lambert** as a thank you to everyone for their friendship and love over the years. Needless to say, Rosie was very overcome by the bouquet of flowers they presented her with!



## NOVEMBER 2023

*The winning numbers were randomly chosen by computer on the morning of the Trustee's Committee Meeting*

Name	WI	Number
Helen Rose	Watnall	22
Bernice McGrath	Bleasby	37
Lucy Richardson	Clarborough	80

## 50/50 Club 2023-2024

3 numbers will be drawn, each winning £15 for 11 months from November 2023 – September 2024  
There will be a Bonus Draw in October with prizes of £60, £30 & £20



## NEW FEDERATION TRUSTEES

We are pleased to welcome two new Trustees to the Federation team.



**Beryl Northcote**, who is currently the **Secretary of Morton, Fiskerton and Rolleston WI** joined us in April. She has been a WI member for over 30 years. Beryl, married for 56 years with two sons enjoys playing Croquet, Rummikub & Kurling, so you won't be surprised to find out she is a member of the Sports & Leisure team!



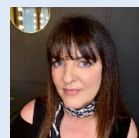
**Bev Stuart**, the newly elected **President of Newark Fountain WI** & a dual member at Dorewood WI joined the team in September after coming for a few months to see what we are like – she must have thought we aren't such a bad bunch! After finishing work in Nottingham a few years ago she made friends locally in Newark by joining a patchwork and quilting group, which she loves, and by joining the WI. Since becoming a member, she had a such a good time that she is now a dual member of Dorewood WI. Last year she was invited to join the Creative Activities Team, and that obviously went well as she has now been invited to become a Trustee. Bev is an avid reader, mostly crime thrillers, murder mysteries, Agatha Christie is a Saint to her. In summer she loves being in the garden, has a greenhouse which houses a lot of cacti, and she keeps bees. In winter she knits and will have a go at most crafts.

It's great to have them join us and we are sure both Beryl and Bev will have fun, have lots of ideas and be inspiring Federation Trustees.

Christmas is a perfect time to stop & reminisce.  
About the many hours we've spent  
Discussing that and this.  
The laughs, the smiles that we have known.  
The wonderful things we've done.  
That make the friendship that we share.  
A very special one!  
Have a very special Christmas, my friends.

## Literary Lunch

**Thursday  
14 March**



12.00pm for 12.30pm. 2 course lunch

Cost: £27.00 inc. Tea/Coffee

**Speaker: Local Author K. L. SLATER**

Venue: Ramsdale Golf Park, Calverton.NG14 6NU

Book via enclosure. C. Date: Thurs 26 February



Members are listed by their name and WI. They will be forever remembered and will all be truly missed.

**Gwenda Ackroyd. Bunny & Bradmore WI. A former President**  
**Rachel Bramble. Oxtown WI**

**Shirley Holt. Oxtown WI**

**Sally Hooton. Hawton & District WI**

**Brenda Whittle. Kimberley WI**

**Christine Richardson. Hickling WI**