



# The Hornblower

2024

Campaigns & Communications Team

## Women's Voices



**Saturday 7 September**

**10.00am**

**Framework Knitters Museum  
Chapel Street, Ruddington**

### WI Co-operative & Individual Competitions

**WI Co-operative: stage an exhibit demonstrating a Campaign from the past or present.**

**Individual: 1. Write a letter to the future.**

**2. Create a brooch or badge highlighting one of the 2020 to 2024 campaigns**

## County Lunch

**Tuesday 24 September**

**12.30pm for 1pm**

**Kingsway Hall, Forest Town**



**Enjoy a two-course lunch and then listen to Neil Hallam:  
a former Nottinghamshire Police Officer, author  
and avid walker presenting the ballads and legends of Robin Hood  
linked with places along the "Robin Hood 500" walkers' route.**



<https://nottinghamshire.thewi.org.uk>



Nottinghamshire WI



Nottinghamshire WI



NottsFedWI



**CONTACT:** Nottinghamshire Federation of WIs. Trent Bridge House, Beastmarket Hill, Newark. NG24 1BN. Telephone: 01636 673550  
**Email:** [admin@nottswi.org.uk](mailto:admin@nottswi.org.uk) **OFFICE HOURS:** Mon, Tues & Wed 9.00am – 3.00pm. Closed Thursday & Friday

**HORNBLOWER CONTACT & PRINT DETAILS:**  
September 2024 edition: Collect from Wed 28 August

**Editor:** Jenny Bailey. Email: [hornblowereditor@nottswi.org.uk](mailto:hornblowereditor@nottswi.org.uk)  
**Copy deadline for October 2024 edition: 4 Sept 2024**

# Chair's Letter

I've said it before, and I'll say it again, 'what a treat 98.5% of you missed at the Summer Lunch.' The 1.5% of us that went had a fantastic time – great food, a lively entertainer and the chance to dance the afternoon away. Everyone who went said how much they enjoyed it. I'm sure you realise that a lot of time, organisation and effort goes into planning events, and we are devastated when we have to cancel things due to lack of numbers. With The Mikron Theatre we were under obligation to the theatre company not to cancel, but we made a loss on the evening due to lack of support. What made it sadder was that it was one of the best of their shows that I've seen.

You know what it is like when you give someone a present and its obvious that they don't like it, and you wish that they had let you know what they would have liked. Well, that is how we feel. We would love to provide you with events that you want to come to. So, get out the pen and paper or open the laptop and tell us what you want what you really, really want.



Best wishes, Helen

**FROM COUNTY OFFICE**  
Federation Secretary: Sue Sanderson



The office will be closed for most of August from Thursday 1st August and reopening on Wednesday 28th August for September Hornblower collection. We will operate a reduced staffing level with annual leave being taken at this time. Mail will be opened and emails monitored.

**ENCLOSURES:** 1. 50/50 Application form; 2. Update on County House; 3. Coffee & Chat Meetings



## Don't Forget . . .

Reminders: Forms to be in the office before:-

- |                                   |                  |
|-----------------------------------|------------------|
| • Programme Planning (9/9)        | <b>19 August</b> |
| • WI Voices Individual Comp (7/9) | <b>23 August</b> |
| • Womens Voices Comp (7/9)        | <b>27 August</b> |
| • Beach Hut Etui (21/9)           | <b>2 Sept</b>    |
| • Darts Pairs (19 & 26/9)         | <b>3 Sept</b>    |
| • Bingo Evening (27/9)            | <b>4 Sept</b>    |
| • County Lunch (24/9)             | <b>16 Sept</b>   |
| • Autumn Quiz (18/10)             | <b>24 Sept</b>   |

### CALENDAR September 2024 See enclosure for application & full details

Date	Event	Time	Location
7/9	Women's Voices WI & Ind Comps	10am	Framework Knitting Mu'em Ruddington
9/9	Programme Planning	10am-12pm	County House TBH
10/9	Coffee & Chat	10am	County House TBH
19/9 & 26/9	Darts Pairs	7pm	Royal Oak, East Bridgford
21/9	Beach Hut Etui	9.30am for 10am	County House TBH
24/9	County Lunch	12.30pm for 1pm	Kingsway Hall Forest Town
27/9	Bingo	7pm	Lowdham VH

**WI SUPPORT TEAM**  
*Programme Planning*  
**Monday 9 September**  
**10am – 12 noon**  
**County House, Newark**  
**Closing Date: Mon 19 Aug**

**WI SUPPORT TEAM**  
Chair: Helen Ainley

Welcome to August everyone, I have just read that August is a gentle reminder that Summer is slowly fading away and Autumn is on its way. Personally, I don't feel we've had much Summer so, I hope as you read this, we are having some late Summer sun. I thought I would give you a little feedback from the "Coffee & Chat" meetings we have been having around the County. Our intention was to bring the Federation out to you, so ideas could be swapped and questions answered, generally making members feel they had a closer connection to the WI Support Team and Nottinghamshire Federation as we sometimes hear that you feel we are remote from you.

We have now held three of these meetings and although they were very enjoyable and the members that came, we hope, have got something from them, the number of members attending has been low which is disappointing. We do have another two 'Coffee & Chat' planned, the first being on **Tuesday 10th September at 10am at County House in Newark** and the second on **Tuesday 8th October at 10am at Blue Diamond Garden Centre, East Bridgford**. Please come along if you are local to either of these, we would love to meet you and chat over coffee/tea and even a cake! We look forward to seeing you. If you need any help from your Support Team, please email me via [helenainley@nottswi.org.uk](mailto:helenainley@nottswi.org.uk) or via the usual office number.



**50/50** **JULY 2024**

The winning numbers were randomly chosen by computer before the Board of Trustees Meeting

Name	WI	Number
Rose King	Dorewood	6
Moira Wager	Anston	66
Kath Rogers	Ravenshead	64

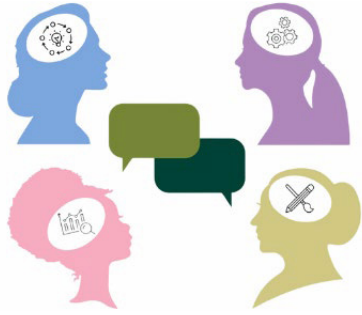


## CAMPAIGNS & COMMUNICATIONS

Chair: Suzanne Plamping

September and we also have the **Women's Voices Competition on 7th September at Ruddington**. There are two individual competitions which will be judged - more details on the Federation website.

**On Saturday 3rd August, 10am – 4pm we are hosting a Re-Craft Market at Sherwood United Reform Church, Perry Road. There are a few tables left if you need to de-stash and there will be lots of bargains to be had so let's save it from going to landfill!**



You might find the 'Dear Sister' Exhibition at Weston Gallery interesting: Lakeside Arts (UoN) which closes Sunday 1st September 2024.

**Open online event: Autism and ADHD in Women and Girls on Thursday 19th September 2024, 7pm-8pm.** NFWI will be holding an online event discussing the issue of Autism and ADHD in Women and Girls, inspired by the Thinking Differently campaign. We will hear directly from neurodivergent women sharing their personal journeys from diagnosis to using everyday techniques to manage their ADHD/autism and the importance of embracing who you are. This session is about women supporting women. They are also hoping to have some special guests. The event is open to non-WI members and is aimed at all women who care about the issue and may not have previously considered the WI as an organisation to join or engage with.

Places are limited but members and supporters will have an 'early bird' opportunity to register interest before the general public. To do so, please complete and submit the form below. <https://mywi.thewi.org.uk/public-affairs-and-campaigns/news-and-actions/Open-online-event-Autism-and-ADHD-in-women-and-girls>



## CREATIVE ACTIVITIES

June Freeman

but we cannot run them at a loss. Your feedback as to why this didn't appeal would be very helpful. A lot of time and effort goes into organising these activities.

Luckily, Cream Tea with Clarins at John Lewis in Nottingham went ahead despite being oversubscribed. Heather managed to arrange with John Lewis for Clarins to hold two sessions that day, so a huge thank you to her.

The next craft workshop is on **Saturday 21st September** at County House when you will have the opportunity to make a **Beach Hut Etui**. Coming up in October, we have arranged an **Autumn Quiz at Oxtun on Friday 18th October**. The enclosures are with your secretary or contact the office for more information.

August is a time when the Creative Activities Team take a rest, although some of us will be on Granny duty! So, I wish you all a good Summer with hopefully lots of sunny weather.



Yet again we had to cancel an event through lack of support. This time it was the visit to Trentham Gardens in July. It's always disappointing when we have to do this, especially for the members who had applied to go on the trip,



## SPORT & LEISURE

Chair: Wendy Richardson

The first Croquet event was on a lovely summer's evening in June. The members all had an enjoyable time and finished off the night with a game against each other. See the full report & photograph in Highlights. The second evening on 1st July was like playing in the middle of winter, the members who came still enjoyed their evening and finished the night with a little game between themselves. Joint winners were **Lesley Booth and Sandra Clarke, Laxton WI**.

We would like to arrange a **foraging walk and talk** next year, so does anyone know of anywhere towards the South of the County that has ideally a mix of hedgerow, meadow, shade, sun, water or stream? This can be the side of a canal or a lesser kept park or wildlife conservation area. If so, please let us know at the office.

Coming up is our very popular **Bingo evening** with a wonderful Pie & Pea supper on **Friday 27 September @ 7pm at Lowdham Village Hall**.



## COUNTY HOUSE UPDATE

As I indicated in my piece in the July Hornblower we have a prospective buyer for the house. They are currently applying for change of use of the building to residential, and we anticipate the sale will continue once permission is granted.



### What we are doing?

We are actively looking for a new venue, which, ideally, will be an office, but these are few and far between to purchase and those we have looked at generally lack parking. We have also looked at bungalows with garage space as these are on one level and have extra storage. However, purchasing a house to use as an office requires change of use planning permission, at a cost.

Temporary serviced office space has been located on Castle Gate, which comprises 4 small offices and a larger meeting room which could accommodate us although we may need to hire storage elsewhere. There is also a minute kitchen and a toilet. The entrance is via the owner's front office or side entrance in the alleyway adjacent to the building.

As we are the Nottinghamshire Federation of WIs our permanent premises, when we find them, could be anywhere in Nottinghamshire. However, we are aware that if the distance is impractical for staff this could lead to redundancies with a cost to the Federation. We have met with the staff to keep them abreast of developments and necessary procedures.

**How YOU can help:** Do you know of a suitable property in your area? We are sorting through everything we own but there is a lot to get through so we could do with some willing help. If you would like to help, please contact the office.

*Kind regards Helen Rose, Federation Chair*

### Sports & Leisure Team

# BINGO EVENING

Friday 27 September 7.00 pm

Lowdham Village Hall.

Pie & Pea supper.

Closing Date: Wed 4 Sept





# Highlights

**Congratulations to Emma Youngs, Secretary of The Hive WI in Beeston** whose members are delighted to share the news that Emma had a beautiful baby boy in June. They look forward to meeting baby Owen soon.

In June 100 members of **Lapwings WI** celebrated their WI's tenth birthday with a lovely afternoon tea at Eastwood Hall. After singing "Jerusalem" everyone enjoyed a delicious selection of sandwiches, scones and cakes as well as the chance to look through the photobooks of all the events and activities the WI has taken part in over the last ten years. Members also had a quiz, and ten lucky members won a £50 bursary towards a course or workshop.



On a beautiful sunny evening WI members met in Fiskerton-cum-Morton to learn how to play croquet. Elaine Maiden from **SOUTHWELL Croquet Club** gave instruction and practice was undertaken. From correctly holding a mallet, to striking the croquet ball, then practising "going through a hoop". The group was then split up so that games could be played on the three lawns. Overall, at the end of very exciting and challenging play, the winners were: **Elaine Pinnick and Donna Bailey from Forest Town WI** both scoring 5 hoops each.

Well played everyone. What a great time was had by all.



In July **Epperstone WI** held a very successful coffee morning raising over £1,000 for the charity **Toilet Twinning** (providing toilets for countries with poor sanitation). Their donation will fund 18 toilets. The courtyard of a member's house was used as the venue with lots of bunting giving the event a festive air, and her beautiful garden was open to the public. True to form, the members not only provided wonderful cakes to go with the coffee, donated by Coffee 200°, but also donated toiletries and food items which made two lovely hampers for the raffle. Local businesses also very generously supported the event by donating raffle prizes. The village tearoom, "Bumbles", very kindly donated a beautiful cake for the **Guess the Weight** competition. Amongst all the activities was a toilet pedestal into which people could put their loose change which raised about £129. Lots of villagers and friends came to support them, making it a really enjoyable morning.



Members are listed by their name and WI. They will be forever remembered and will all be truly missed.

**Kate Hodgett, Kimberley WI**

**Margaret Davey, Mansfield Woodhouse & Pleasley Vale WI**

**Judith Robinson, Nuthall & District WI**

**Karen Mawer, Eakring WI**

**Sandra Sheil, Ollerton WI**

**Brenda Chapman, Woodborough WI, a former President**

**Margaret Foss, East Bridgford WI, a former President.**

Margaret became a member of the Federation's Home Economics & Crafts Committee from 1980 until 2013 during which time she became Certificate organiser, **National Cookery Judge** and a **Regional Tutor Trainer** for the NFWI. She trained members to become tutors with a City & Guilds teaching qualification, was a **Denman Cookery Tutor** for over 20 years and wrote for the "WI Best Kept Secrets" set of cookery books. Margaret ran Food skills courses for Federation members and WIs, she was the **Voluntary Education Co-Ordinator**, eventually becoming the **Skills Co-Ordinator** from 2004–2007. In 1994 the 1st Bramley Apple Pie Competition took place with Margaret as the Chief Judge; she was on the main **Bramley Apple Committee** & continued organising the much larger competition it became and judging until 2018 when WI involvement ended. Margaret was a **Food Standards Adviser** to the NFWI working on Government committees. Margaret and Jane Jefferson were the co-editors of the wonderful Federation Cookery Book '**Favourite Apple Recipes**'. Her love of cookery, teaching and commitment to whatever she did was of great help and benefit to our members. Since 2015 Margaret and her husband Peter have given talks and shown slides to many WIs on their love of Iceland, travelling there over eleven times. The Trustees and staff send our deepest sympathy to Peter and her family.

Thought of the month . . .

Laughter is the sensation of feeling good all over and showing it principally in one place